

BE61 Avinox

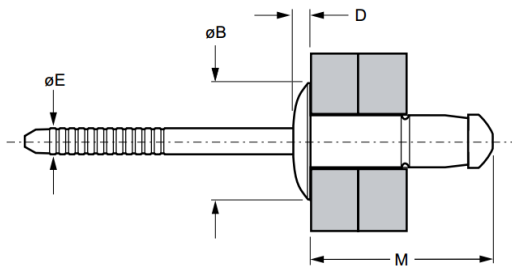
Dome head · Stainless steel body · Stainless steel stem · High strength bulbing
3.2 mm (1/8") - 4.8 mm (3/16")

Features

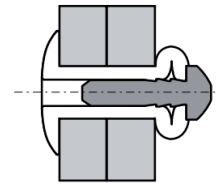
- Excellent bulbing tail formation
- High shear and tensile strength providing strong, vibration resistant joints
- Provides a large blind side bearing area against the rear sheet
- Spreads the tail bearing load/clamp load on the rear sheet making it ideal for use in thin sheet materials
- Good hole fill compensates for irregular, oversized, slotted or misaligned holes
- Retained stem avoids damage, electrical problems or rattling caused by loose stems
- Stainless steel material suitable for high corrosion resistance and applications requiring elevated temperatures

Material

- Body: Stainless steel, polished
- Stem: Stainless steel, natural



Before Placement



After Placement

Part No.	Size ø	Grip Range		Hole Size		M	øB	D	øE	Shear (typical) kN	Tension (typical) kN
		min.	max.	min.	max.						
0BE61-00408	3.2 (1/8")	1.0	3.0	3.3	3.4	9.0	6.6	1.1	2.1	1.6	2.0
0BE61-00411		3.0	5.0			11.5				1.7	
0BE61-00414		5.0	7.0			14.1				3.2	
0BE61-00509	4.0 (5/32")	1.0	3.0	4.1	4.3	10.3	8.0	1.5	2.6	2.8	4.0
0BE61-00512		3.0	5.0			12.9				5.2	
0BE61-00516		5.0	7.0			15.6				5.2	
0BE61-00611	4.8 (3/16")	1.5	3.5	4.9	5.1	12.8	9.6	1.5	3.2	5.5	5.0
0BE61-00614		3.5	6.0			15.4					
0BE61-00618		6.0	8.5			18.4					
0BE61-00619		7.0	10.0			19.9					



Can't find what you are looking for?

We can provide customized finishing and colouring.
Contact your nearest [Gripwell](http://www.gripwell.com) team for assistance!